



# BELLEVUE TECH CENTER

NE 24th St & 156th Ave NE

## ACTIVE AVAILABILITIES

BUILDING	SUITE(S)	RSF	ADDRESS
2002	150	4,634 RSF	2002 158th Ct NE
2010	110	2,031 RSF	2010 156th Ave NE
2010	220	1,668 RSF	2010 156th Ave NE
2010	300	10,475 RSF	2010 156th Ave NE
2010	301	5,811 RSF	2010 156th Ave NE
2010	300+301	16,286 RSF	2010 156th Ave NE
2077	FULL BLDG	17,660 RSF	2077 158th Ct NE



For leasing information:

**MARK FLIPPO** | 425.974.4007 | mark.flippo@jll.com  
**JASON BLOOM** | 425.450.1102 | jason.bloom@kidder.com

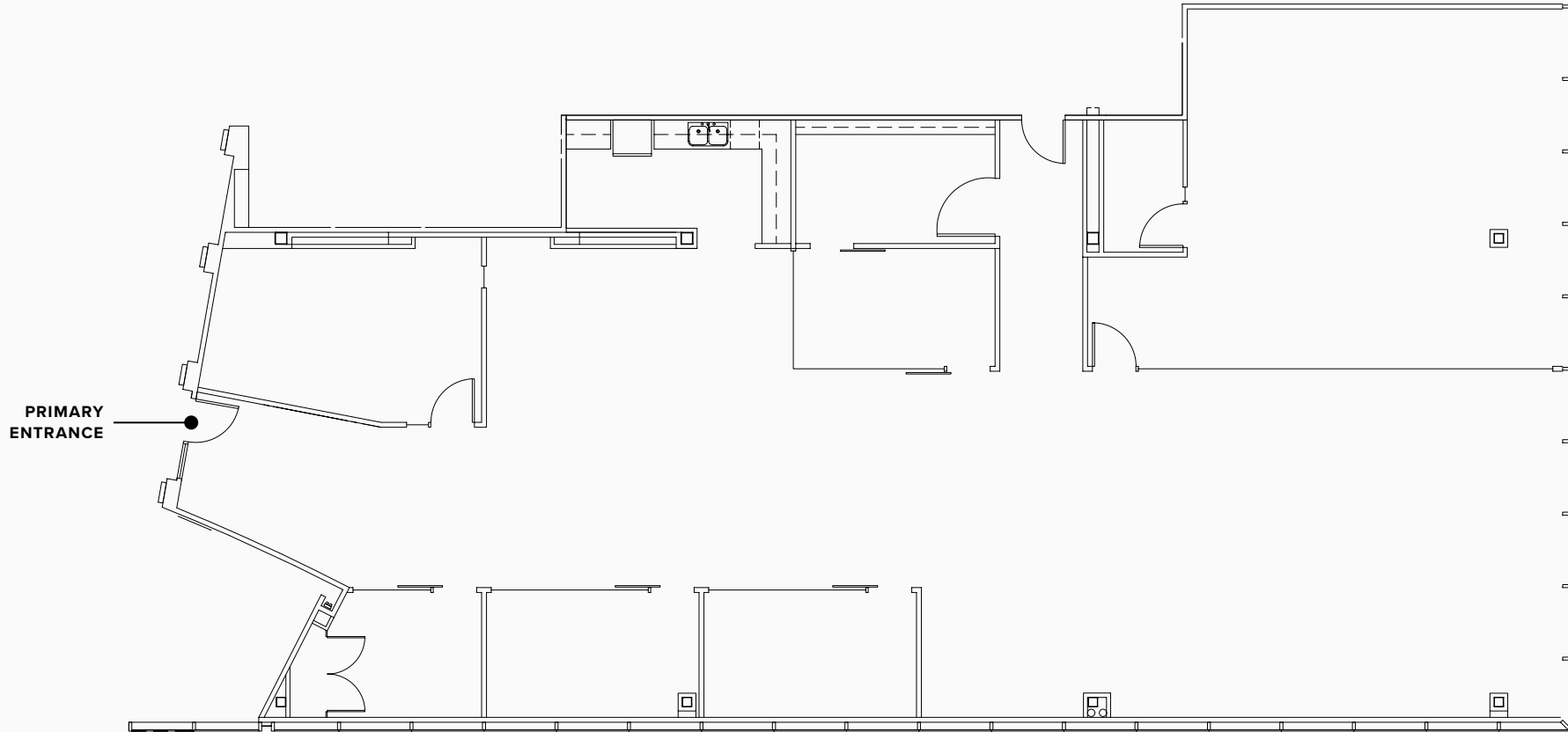
© 2024 • Jones Lang LaSalle Brokerage Inc. Lic #01856260 | Although information has been obtained from sources deemed reliable, neither Owner nor JLL makes any guarantees, warranties or representations, express or implied, as to the completeness or accuracy as to the information contained herein. Any projections, opinions, assumptions or estimates used are for example only. There may be differences between projected and actual results, and those differences may be material. The Property may be withdrawn without notice. Neither Owner nor JLL accepts any liability for any loss or damage suffered by any party resulting from reliance on this information. If the recipient of this information has signed a confidentiality agreement regarding this matter, this information is subject to the terms of that agreement.



# BELLEVUE TECH CENTER

SUITE 150  
4,634 RSF

BLDG  
2002



2002 158TH CT NE  
BELLEVUE, WA 98008

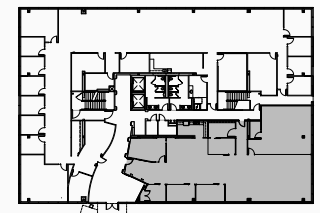
DRAWING NOT TO SCALE

For leasing information:

**MARK FLIPPO** | 425.974.4007 | [mark.flippo@jll.com](mailto:mark.flippo@jll.com)

**JASON BLOOM** | 425.450.1102 | [jason.bloom@kidder.com](mailto:jason.bloom@kidder.com)

KEY PLAN



© 2024 • Jones Lang LaSalle Brokerage Inc. Lic #01856260 | Although information has been obtained from sources deemed reliable, neither Owner nor JLL makes any guarantees, warranties or representations, express or implied, as to the completeness or accuracy as to the information contained herein. Any projections, opinions, assumptions or estimates used are for example only. There may be differences between projected and actual results, and those differences may be material. The Property may be withdrawn without notice. Neither Owner nor JLL accepts any liability for any loss or damage suffered by any party resulting from reliance on this information. If the recipient of this information has signed a confidentiality agreement regarding this matter, this information is subject to the terms of that agreement.



# BELLEVUE TECH CENTER

SUITE 110  
2,031 RSF

BLDG  
2010



2010 156TH AVE NE  
BELLEVUE, WA 98008



For leasing information:

**MARK FLIPPO** | 425.974.4007 | mark.flippo@jll.com  
**JASON BLOOM** | 425.450.1102 | jason.bloom@kidder.com

DRAWING NOT TO SCALE

Dedicated Reception  
2 Private Offices  
Flexible Open Office

6-Person Meeting Space  
Open Break on Window Line

## FINISH OVERVIEW



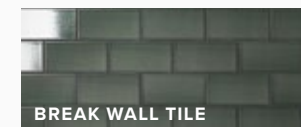
PRIMARY PAINT

ACCENT PAINT



LUXURY VINYL TILE

BREAK COUNTER



BREAK WALL TILE

BREAK MILLWORK

FURNITURE SHOWN IS REPRESENTATIONAL ONLY

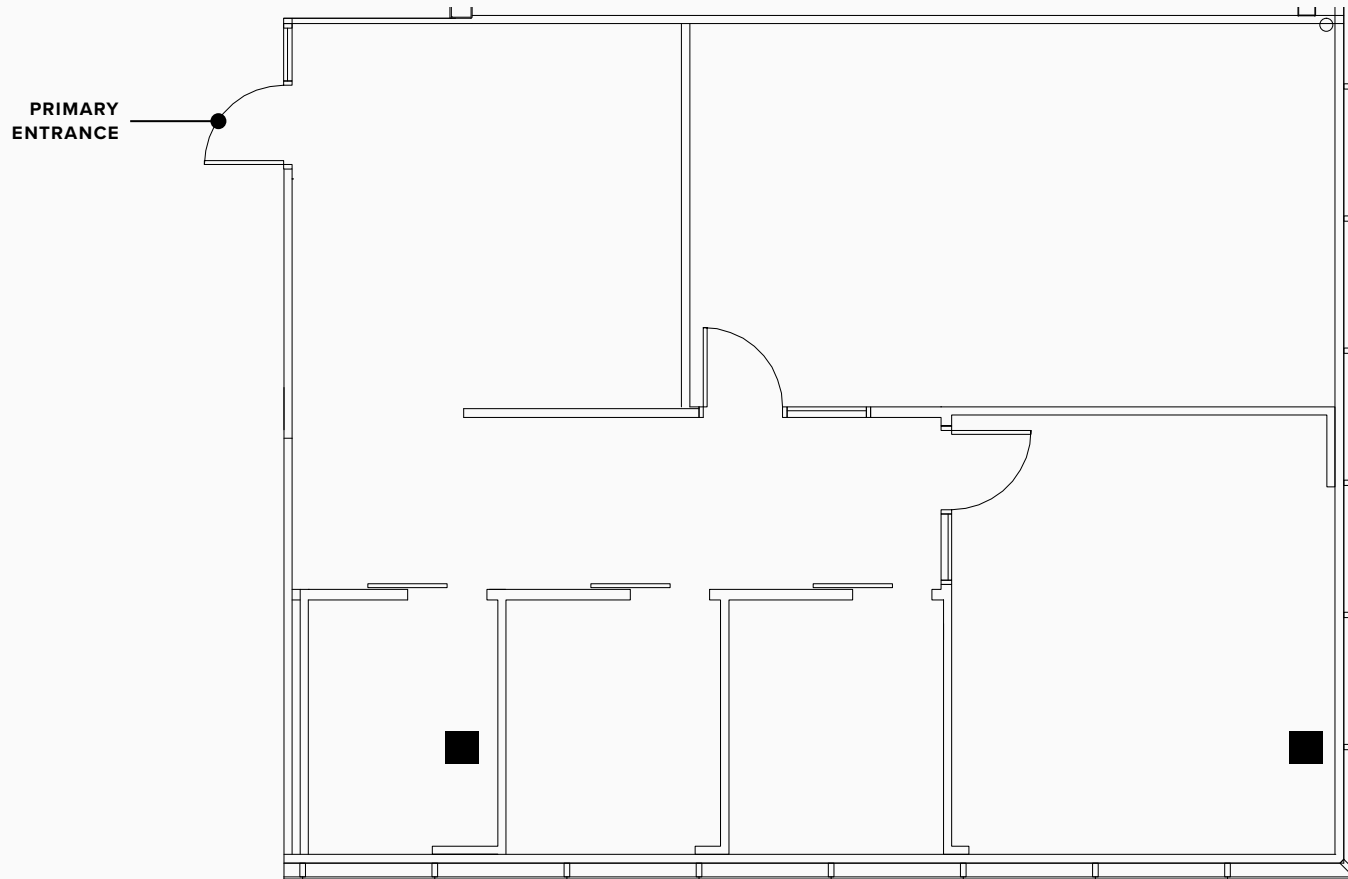
© 2024 • Jones Lang LaSalle Brokerage Inc. Lic #01856260 | Although information has been obtained from sources deemed reliable, neither Owner nor JLL makes any guarantees, warranties or representations, express or implied, as to the completeness or accuracy as to the information contained herein. Any projections, opinions, assumptions or estimates used are for example only. There may be differences between projected and actual results, and those differences may be material. The Property may be withdrawn without notice. Neither Owner nor JLL accepts any liability for any loss or damage suffered by any party resulting from reliance on this information. If the recipient of this information has signed a confidentiality agreement regarding this matter, this information is subject to the terms of that agreement.



# BELLEVUE TECH CENTER

SUITE 220  
1,668 RSF

BLDG  
2010



2010 156TH AVE NE  
BELLEVUE, WA 98008



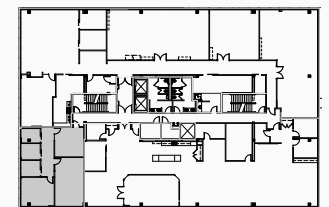
For leasing information:

**MARK FLIPPO** | 425.974.4007 | [mark.flippo@jll.com](mailto:mark.flippo@jll.com)

**JASON BLOOM** | 425.450.1102 | [jason.bloom@kidder.com](mailto:jason.bloom@kidder.com)

DRAWING NOT TO SCALE

KEY PLAN



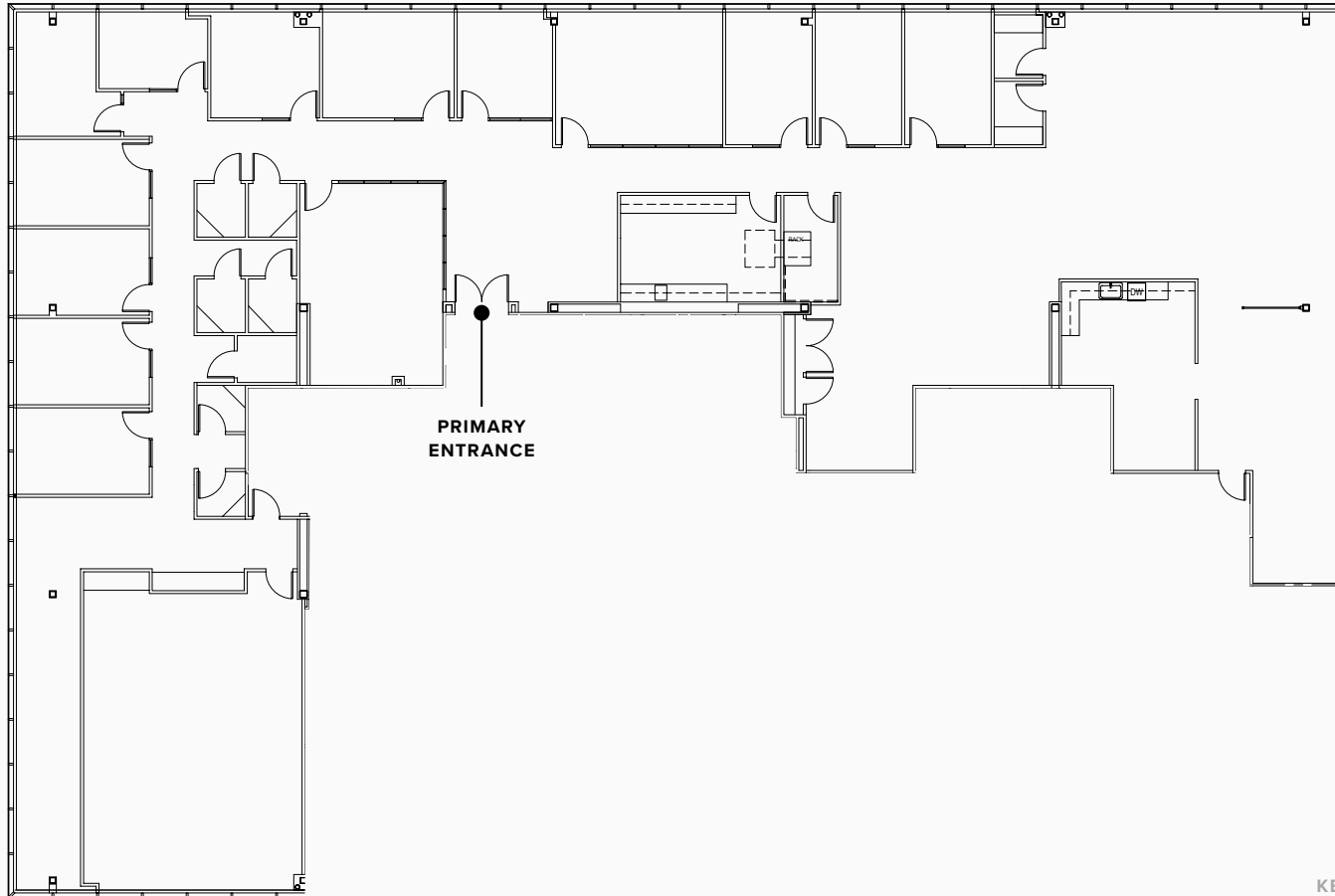
© 2024 • Jones Lang LaSalle Brokerage Inc. Lic #01856260 | Although information has been obtained from sources deemed reliable, neither Owner nor JLL makes any guarantees, warranties or representations, express or implied, as to the completeness or accuracy as to the information contained herein. Any projections, opinions, assumptions or estimates used are for example only. There may be differences between projected and actual results, and those differences may be material. The Property may be withdrawn without notice. Neither Owner nor JLL accepts any liability for any loss or damage suffered by any party resulting from reliance on this information. If the recipient of this information has signed a confidentiality agreement regarding this matter, this information is subject to the terms of that agreement.



# BELLEVUE TECH CENTER

SUITE 300  
10,475 RSF

BLDG  
2010



2010 156TH AVE NE  
BELLEVUE, WA 98008

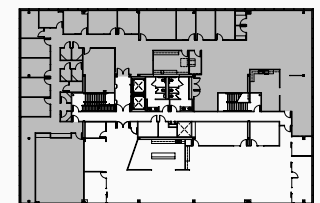
For leasing information:

**MARK FLIPPO** | 425.974.4007 | mark.flippo@jll.com

**JASON BLOOM** | 425.450.1102 | jason.bloom@kidder.com

DRAWING NOT TO SCALE

KEY PLAN



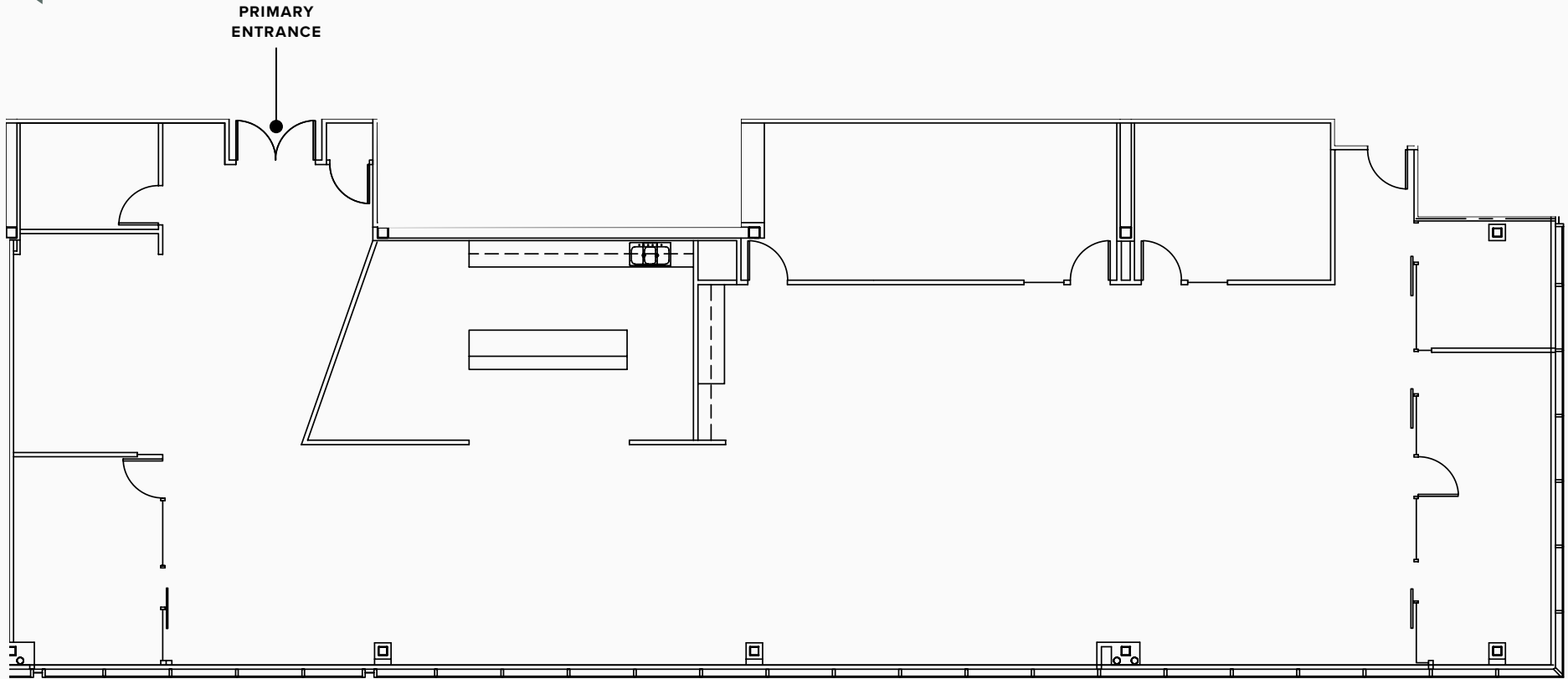
© 2024 • Jones Lang LaSalle Brokerage Inc. Lic #01856260 | Although information has been obtained from sources deemed reliable, neither Owner nor JLL makes any guarantees, warranties or representations, express or implied, as to the completeness or accuracy as to the information contained herein. Any projections, opinions, assumptions or estimates used are for example only. There may be differences between projected and actual results, and those differences may be material. The Property may be withdrawn without notice. Neither Owner nor JLL accepts any liability for any loss or damage suffered by any party resulting from reliance on this information. If the recipient of this information has signed a confidentiality agreement regarding this matter, this information is subject to the terms of that agreement.



# BELLEVUE TECH CENTER

SUITE 301  
5,811 RSF

BLDG  
2010



2010 156TH AVE NE  
BELLEVUE, WA 98008

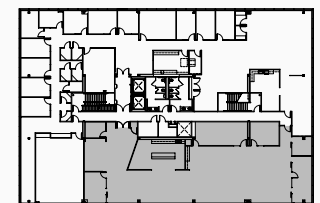
DRAWING NOT TO SCALE

For leasing information:

**MARK FLIPPO** | 425.974.4007 | mark.flippo@jll.com

**JASON BLOOM** | 425.450.1102 | jason.bloom@kidder.com

KEY PLAN



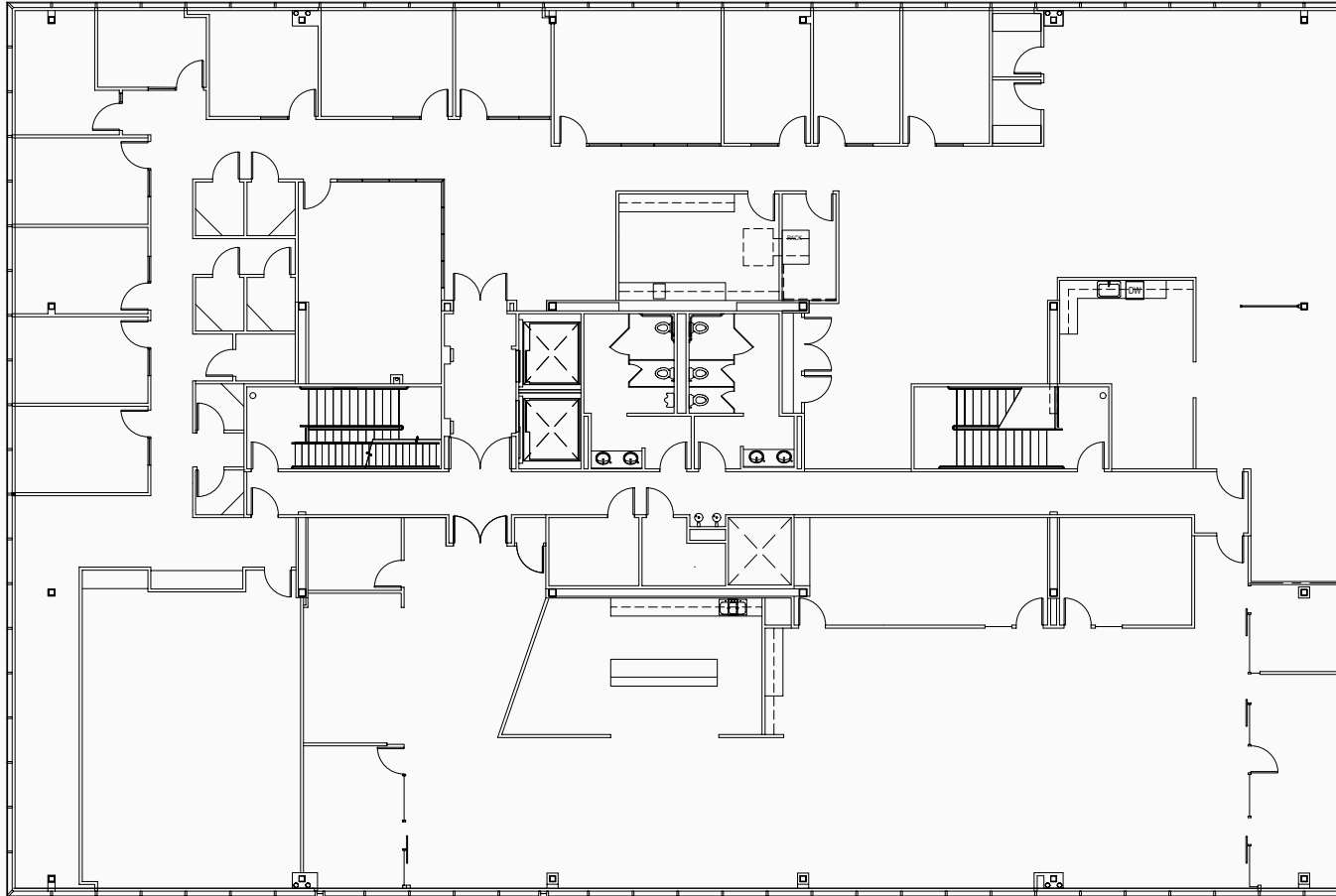
© 2024 • Jones Lang LaSalle Brokerage Inc. Lic #01856260 | Although information has been obtained from sources deemed reliable, neither Owner nor JLL makes any guarantees, warranties or representations, express or implied, as to the completeness or accuracy as to the information contained herein. Any projections, opinions, assumptions or estimates used are for example only. There may be differences between projected and actual results, and those differences may be material. The Property may be withdrawn without notice. Neither Owner nor JLL accepts any liability for any loss or damage suffered by any party resulting from reliance on this information. If the recipient of this information has signed a confidentiality agreement regarding this matter, this information is subject to the terms of that agreement.



# BELLEVUE TECH CENTER

SUITES 300 + 301  
16,286 RSF

BLDG  
2010



2010 156TH AVE NE  
BELLEVUE, WA 98008



For leasing information:

**MARK FLIPPO** | 425.974.4007 | [mark.flippo@jll.com](mailto:mark.flippo@jll.com)

**JASON BLOOM** | 425.450.1102 | [jason.bloom@kidder.com](mailto:jason.bloom@kidder.com)

DRAWING NOT TO SCALE

© 2024 • Jones Lang LaSalle Brokerage Inc. Lic #01856260 | Although information has been obtained from sources deemed reliable, neither Owner nor JLL makes any guarantees, warranties or representations, express or implied, as to the completeness or accuracy as to the information contained herein. Any projections, opinions, assumptions or estimates used are for example only. There may be differences between projected and actual results, and those differences may be material. The Property may be withdrawn without notice. Neither Owner nor JLL accepts any liability for any loss or damage suffered by any party resulting from reliance on this information. If the recipient of this information has signed a confidentiality agreement regarding this matter, this information is subject to the terms of that agreement.



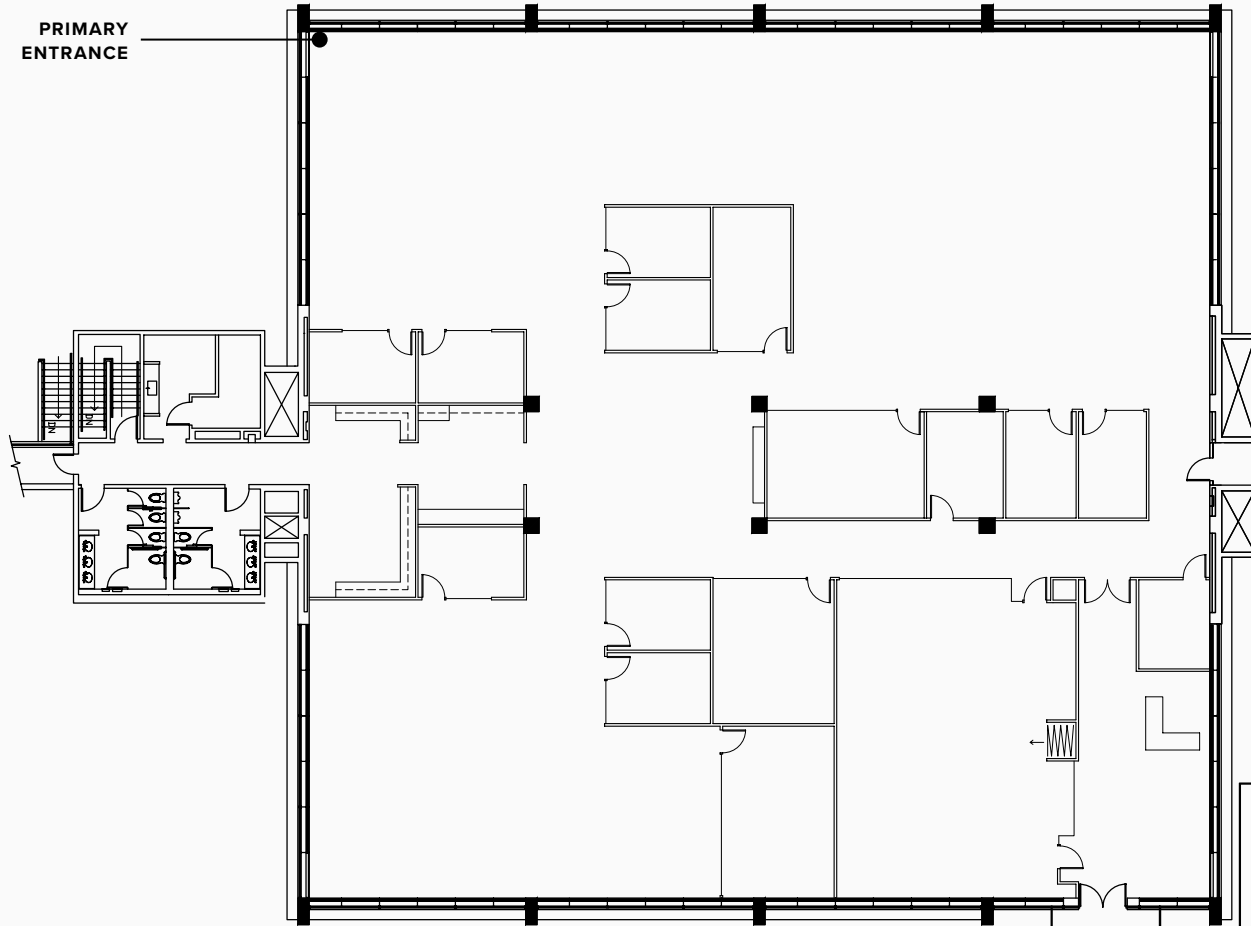


# BELLEVUE TECH CENTER

FULL BUILDING

17,600 RSF

BLDG  
2077



2077 158TH CT NE  
BELLEVUE, WA 98008

N▶ For leasing information:

**MARK FLIPPO** | 425.974.4007 | [mark.flippo@jll.com](mailto:mark.flippo@jll.com)

**JASON BLOOM** | 425.450.1102 | [jason.bloom@kidder.com](mailto:jason.bloom@kidder.com)

DRAWING NOT TO SCALE

© 2024 • Jones Lang LaSalle Brokerage Inc. Lic #01856260 | Although information has been obtained from sources deemed reliable, neither Owner nor JLL makes any guarantees, warranties or representations, express or implied, as to the completeness or accuracy as to the information contained herein. Any projections, opinions, assumptions or estimates used are for example only. There may be differences between projected and actual results, and those differences may be material. The Property may be withdrawn without notice. Neither Owner nor JLL accepts any liability for any loss or damage suffered by any party resulting from reliance on this information. If the recipient of this information has signed a confidentiality agreement regarding this matter, this information is subject to the terms of that agreement.

